

# Auxiliary Lock User Manual

## New Standard of Premium Digital Doorlock

It's hoped that you use the products after reading carefully the manual.  
It's possible to change some parts of function without prior notice  
to users in order to improve the products's performance.



**HDL-1100S**

Opening method : 2-Way  
Password + Card

- You are kindly recommended to install the anticrime devices for the better and stronger security.
- It's prohibited to dismantle, assemble and process the door lock with other purposes than installation and construction without a prior written approval from this company.
- It's possible to change the products and their manuals without prior notice in order to upgrade their performance.

Made in KOREA



## Easy! Smart Digital Door Lock HDL-1100S

### A convenient digital door lock

- Be sure to make door open manually in emergency case
- This product can be damaged when the door lock gets broken



### CAUTIONS

- To receive our full warranty services, please make an entry of all the items in a quality assurance.
  - If you do not make the entry, you must pay even during our warranty period.
  - In the event of malfunctions due to condensation and moisture, you must pay for warranty services.
- ※ For problems due to condensation or with installation, you must pay for the services.
- ※ In the event you have forgotten passwords, or have lost a card / a manual key, you must pay for the services.



#### Door-opening function with the use of password, card

You can use your password and card key conveniently and freely make settings and changes.



#### Connection to home network system (Optional)

Door-opening is possible indoors through a connection to the remote controller or wireless transmitter.



#### External double locking device

While you are out for long hours, operation of the indoor buttons can be stopped, through which theft through the milk drop is prevented.



#### Alarm function in case of housebreaking and theft

If a wrong password is entered 3 or more times, all the operation is stopped for 30 seconds, and forced door-opening results in an alarm sounding.



#### Fire safety function

It operates at a certain heat(around 65 degree Celsius) in case of fire, which may somewhat vary by installation environment.

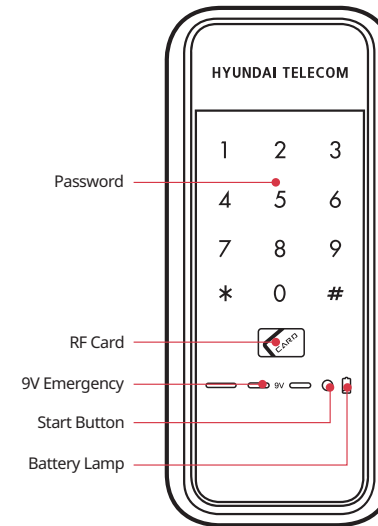


#### Self-diagnosis function

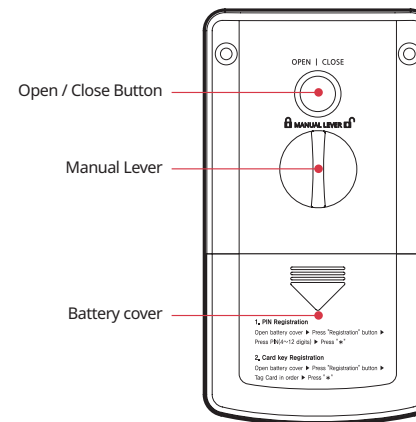
The door lock itself diagnoses defect, and informs you of malfunction or the battery change time through the alarm.

## Contents

- General Information · 3
- Precautions · 4
- How to use · 5
- Quick Manual · 11
- Product specification · 12
- Product Features · 13
- Warranty Service for Product Defects · 14
- Warranty Card(for Company) · 15



**Auxiliary Lock(OUT)**



**Auxiliary Lock(IN)**

Please read the precautions thoroughly for your safety!



**DANGEROUS**

### You should not dismantle randomly the product

- The digital product is assembled minutely and complicatedly in the inside.
- The random dismantlement may be dangerous besides making the troubles of the product.
- Consumer's responsibility in case of random dismantlement .



**CAUTIONS**

### Prohibition of water cleaning

- It's prohibited to clean with water because water cleaning may disturb an electronic circuit.
- It's hoped that a dry towel is used for cleaning the product.

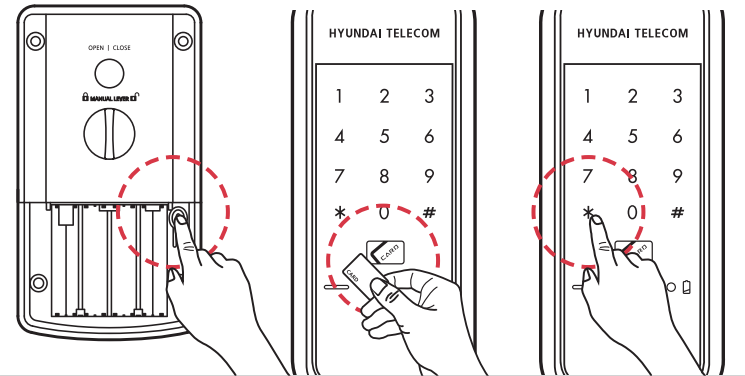


**WARNING**

### The response measures to electric discharge of battery are as follows

- The usage period of battery is at most four months to eight months. (Based on the use of ten times a day)  
Exchange the battery at that time.
- Use 4 alkaline batteries of 1.5v AA.  
(Rechargeable batteries unusable)
- In case of full discharge, it's possible to open the door with touch-key and password with linking 9V alkaline battery to outdoor body terminal.

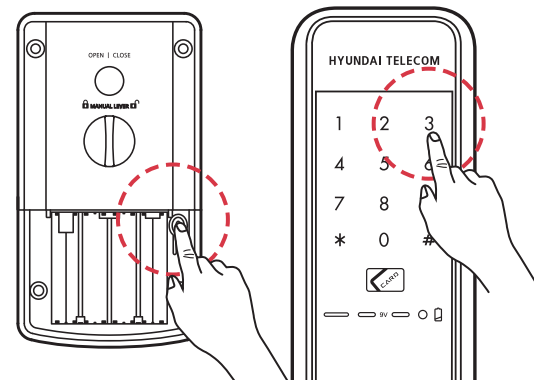
## 1. Card registration



- 1 Open the battery cover and press the button.
- 2 Place RF card on the door lock. (Max 50 Cards available)
- 3 Press "\*" and it completes with the melody sound.

- ※ Certainly check whether the card key was properly registered.
- ※ When re-register, the card key registered in past is added.
- ※ Registration is possible only with the door open.

## 2. Card key deletion



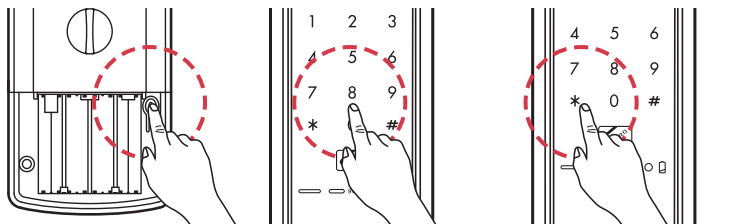
- 1 Open the battery cover and press the button.
- 2 Press number 3 for 3sec and it deletes all card registration with beep sound.



**WARNING**

For your safety, we recommend you to use all RF-card and Tag that manufacturer provide with. HYUNDAI TELECOM confirms that "ISO 14443 Type A" certified RF-card and Tag to be used with the Digital door locks. We, HYUNDAI TELECOM, are not responsible with the cases that customers use other type RF-card and Tag, credit card, Smart card and Mobile phone.

## 3. Password registration



- ❶ Open the battery cover and press the button.
- ❷ Enter your password. (3-12 digits available)
- ❸ Press “\*” and it completes with the melody sound.

After password registration, make sure it works

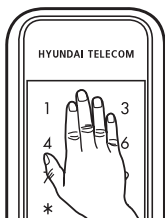


1. When you register passwords for the first time or change them, the door may be locked by mistake. Make sure to open the front door and carry an card, with you.
2. For the passwords, specify the 3-12 digit numbers except for “\*” and “#”.
3. If you enter new passwords, the existing ones will be deleted.
4. When all products are delivered, their passwords are set into 1, 2, 3, 4, 5, 6, 7, 8, 9, 0 and 1, 2, 3, 4.
5. When you install a product for first time, make sure the user enters the passwords himself/herself.

### 3-1. One time password registration method

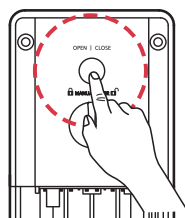
- ❶ Press the Start button for 3 sec with the door close, and the number pad will be lit.
- ❷ Enter the current password and “\*.”
- ❸ Enter the one time password and “\*.”
- ❹ After you use the one time password, this password will be deleted.

## 4. How to close manually



### Door close outside

Close the door and place your palm on numeric button.

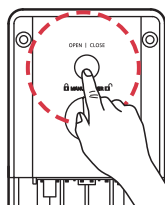


### Door close inside

Press OPEN / CLOSE button.

With releasing Auto-door close function, door does not close automatically and follow up as left manual

## 5. Auto-Close / Manual-Close setting



### Auto-Close setting

Press “OPEN / CLOSE” button for 5sec and press number 1. You will hear long beep sound as confirmation.



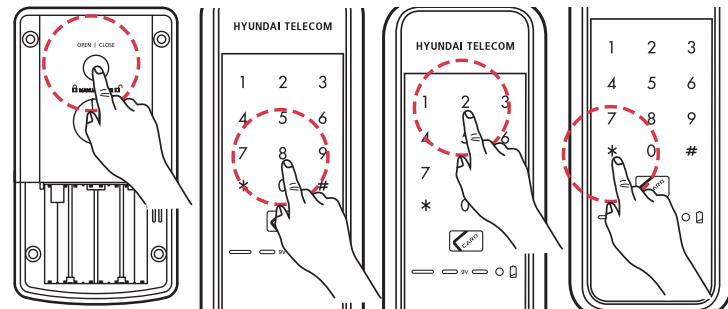
### Manual-Close setting

Press “OPEN / CLOSE” button for 5sec and press number 1. You will hear short beep sound as confirmation.

- Beep bee beep sound -Auto Setting
- Beep sound -Manual Setting

※ When products are delivered, they are set into Auto Lock.

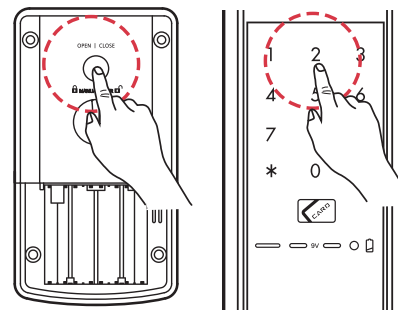
## 6. Auto-Close / Time setting



### Auto-Close setting

Press “OPEN / CLOSE” button for 5sec and then you will hear beep sound. Press number 8 and press number (1~8) for time set and press “\*” to complete. Factory default is 2sec.

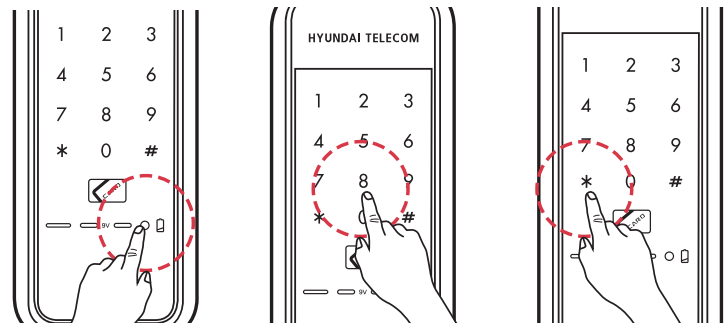
## 7. Imaginary number function (Optional)



- ❶ Press “OPEN / CLOSE” button for 5sec.
- ❷ Press number 2.

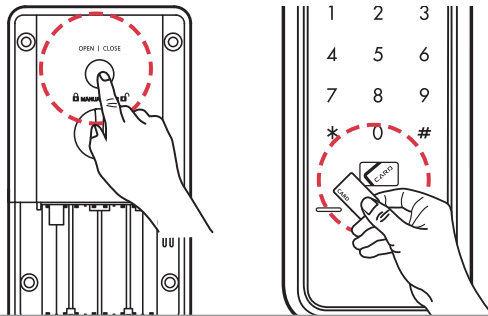
- With long beep sound : Activated
- With short beep sound : Deactivated

## 8. How to open the door



### Opening door with password from outside

Place hand on keypad or press Start button to lighten keypad. Press registered password and press “\*” or “#” to open door.

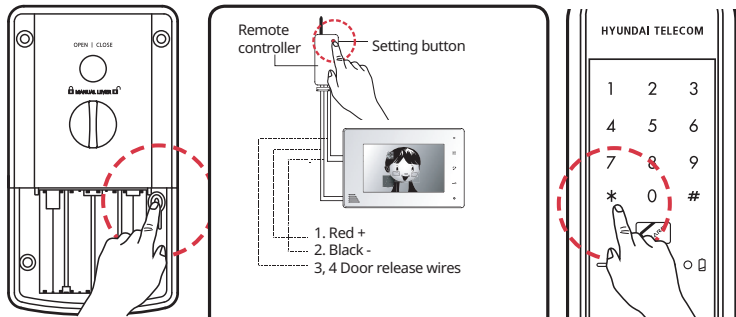


**Door open with RF card**  
Place RF card on door lock front and lock is opened with melody.

## Door open in house

Press "OPEN / CLOSE" button to open the door.

## 9. Way to register wireless transmission / reception communication device module for door lock (Optional)



① Open the battery cover and press the button

Bleep sound comes out ~

※ If you add one, you have to delete and register all in order (Include remote controller)

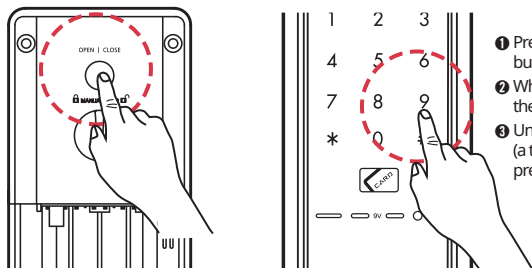
② Press Setting button for 5 sec on remote controller and you will hear long beep sound

※ Video door phone screen should be on while registration

③ Press "\*" button on door lock to complete registration and you will hear same long beep sound.

Bleep Bleep ~ ~ ~

## 10. High / Low tone setting

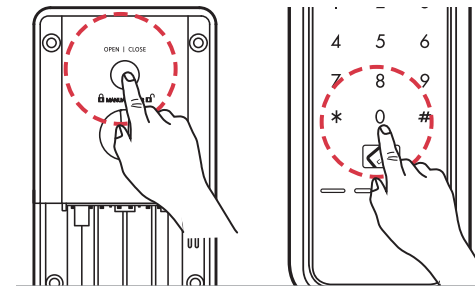


① Press "OPEN / CLOSE" button for 5sec.

② Whenever pressing "9", the sound will change by level.

③ Until the pitch wanted is heard (a total of 8 levels), press "9" and then "\*"

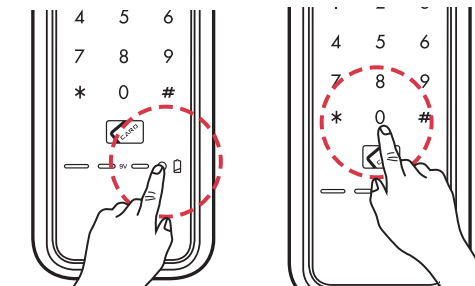
## 11. Buzzer / silent setting



- ① Press "OPEN / CLOSE" button for 5sec.
- ② Press number 0 to change buzzer with silent.

※ You can set buzzer by following the above set again.

## 12. Manner Mode



- ① Pressing Start button will activate manner mode, and door will open with no configuration alarm.
- ② Auto-setting to non-manner mode after door opening.

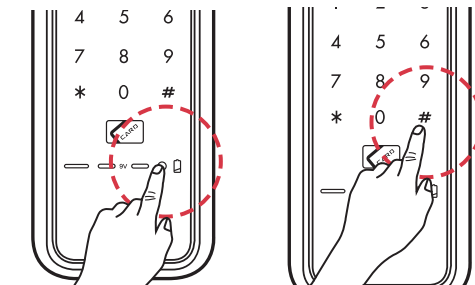
## 13. Disarm alarm

### When the warning happens

If an alarm sounds, press the password or touch the card key to clear the alarm.

However, when a malfunction alarm sounds (password error), operation stops for 30 seconds.

## 14. How to close in force

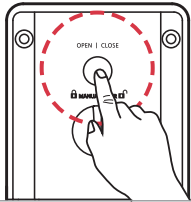


### Force lock from outside

Press "Start" button and "#" for 5sec to complete force lock. You will hear beep sound as confirmation.

This is double lock when you leave home for a long time and inside buttons are not working.

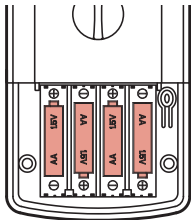
- ▶ When "Force lock from outside" activated, "OPEN / CLOSE" button is not working.
- ▶ When "Force lock from outside" activated, it gets deactivated if you turn the manual lever from inside.
- ▶ When "Force lock from outside" activated, you can open the lock with password or card.



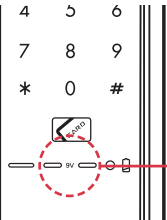
### Force lock from inside

Press "OPEN / CLOSE" button for 5sec and it completes with melody sound.  
This is double lock and outside buttons are not working.  
It gets deactivated when you open the lock from inside.

## 15. Battery replacement method



4PCS of 1.5V AA batteries inserted

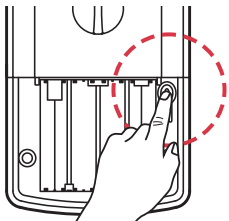


In case of Battery gone, you can put 9V battery on front cover as emergency power source

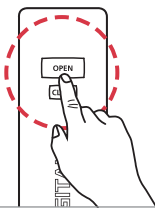
Emergency power contact

- Battery life time** : 4M to 8M upon 10times using a day.
- Battery change alarm** : Blinking red lights with melody.  
Open battery cover and replace all 4PCS of 1.5V AA at once. Make sure its polarity.
- Emergency power supply** : After battery is fully discharged, place 9V battery on emergency power contact and open the door with password or RF card.

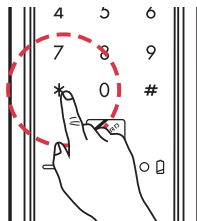
## 16. Remote control registration (Option)



① Open the battery cover and press the button.



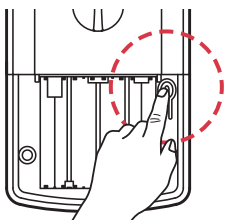
② Press the "OPEN" button.



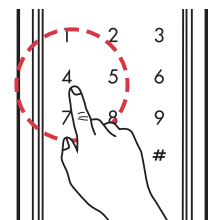
③ Press "\*" button on the door lock and you will hear beep sound as confirmation.

- ※ Max 3 remote controllers connectable
- ※ If you add one, you have to delete and register all in order

## 17. Remote control deletion



① Open the battery cover and press the button.



② Enter number 4 to for 3sec to delete remote controller function.

Function	How to	Ready
<b>Password Change</b>	Press the button ➡ Press password(3-12 Digit) ➡ Press the "*" button	
<b>Card Registration</b>	Press the button ➡ Tag card in order ➡ Press the "*" button	Keep door open and open battery cover. There is a button.
<b>Card Deletion</b>	Press the button ➡ Press the "3" button for 3 sec	
<b>Auto / Manual Lock</b>	Press the "OPEN" button for 5 sec and Press "1" button	
<b>Imaginary Mode</b>	Press the "OPEN" button for 5 sec and Press "2" button (It is possible to use the fake number)	
<b>To Register Passwords for 5 users</b>	Press the "OPEN" button for 5 sec and Press "3" button	
<b>To Change into Card Auto / Manual</b>	Press the "OPEN" button for 5 sec and Press "5" button	
<b>Double Checking to Register</b>	Press the "OPEN" button for 5 sec and Press "7" button <b>(To register new password / card, press register button ➡ enter current password and "*" ➡ enter new password/place card on card reader in order ➡ press "*" to end registration)</b>	Keep Door Open
<b>To Set the time for Auto Lock</b>	Press the "OPEN" button for 5 sec and Press "8" + Press the number "2" (Changed into 2 sec)	
<b>To Change a sound into Low / High</b>	Press the "OPEN" button for 5 sec and whenever Pressing "9", the sound will change by level	
<b>To Change a sound into Buzzer / Silence</b>	Press the "OPEN" button for 5 sec and Press "0" button	

## HDL-1100S

Item	Specification of HDL-1100S
<b>Rated Voltage</b>	4ea 1.5V (LR6) AA alkaline batteries (6V)
<b>Emergency Power Source</b>	1ea 9V battery(6LF22)(sold separately)
<b>Operation Method</b>	Electronic control(entering password or reading card key)
<b>Weight</b>	700g(including the outdoor and indoor units)

<b>Dimensions</b>	Indoor unit	160mm(W) X 90mm(H) X 50mm(D)
	Outdoor unit	71mm(W) X 162mm(H) X 17mm(D)

Item	Usable Frequency	Type of Radio Wave	Type of Radio Wave	Type of Radio Wave	Power Supply
<b>RFID</b>	13.56MHz	A1D	ASK	Single	DC 6V (1.5V AA X 4EA)
<b>For Safety System</b>	447.275 MHz	F1D	FSK	Single	
<b>Self-Regulatory Safety Confirmation Certificate No.</b>	B223H006-7002B				
<b>Type and Symbol</b>	NF-T-NK-S				
<b>Certification No.</b>	MSIP-CMM-H1P-M-1100				
<b>Model</b>	HDL-1100S	<b>Country of Manufacture</b>	Made in KOREA		
<b>Vendor</b>	HYUNDAI TELECOM.CO., LTD.				
<b>Date of Production Year</b>	Year :		Month :		

- \* You are recommended to use this device (a Class B device registered for EMC(Electromagnetic Compatibility)) chiefly at home.
- \* Any of the details of the manual can be changed without notifying you in advance for improvement of the product functions. (a sticker will be used on the follow-up model for any change)

- The open / close functions of card and one-touch**  
All motions became convenient through simple one-touch
- The function of automatic re-Locking**  
The automatic locking in case of closing a door
- Self-diagnostic function**  
The door lock diagnoses the troubles of the system by itself, making you know the troubles of the function and the time to exchange batteries through alarm sound
- It's available for 5 persons to use the password**  
Five persons can use ID differently each other
- Automatic locking and time setting available**  
Free time setting available
- The function of outward double-locking device**  
In case of long-time outing, the motion of inside button is set to stop so that the robbery through milk slot can be prevented
- Remote controller, home network registration available (Optional)**  
Available opening doors with remote controller in door
- No. of cards you can register**  
You can register up to 50 cards
- Manner function**  
Through the control of button and melody occurring from the product's motion, it's possible to prevent the neighbors from the noise at midnight
- Function of fire sensor**  
In case of fire, a status of 65° ±5 makes the door opened automatically So, you can escape safely
- Imaginary number function**  
The function of making other's passwords unknown
- Button lighting device distinguishable in darkness**  
When the device is worked, the lamp is lighted, so it's available to use even in darkness

## Warranty Service for Product Defects

Damage types		Compensation items	
		Within warranty period	After warranty period
<b>State of Normal Use</b>	In case the troubles occur within 12 months after installation	Repair for free	Repair for Cost
	In case the same troubles occur two times	Repair for free	Repair for Cost
	In case the same troubles occur three times	Product replacement	Repair for Cost
	In case there is no any parts for repair	Product replacement	Product replacement (Limited to flat-rate depreciation)
<b>Intention or Fault of Consumer</b>	In case of an official trip because of consumer's mistake including the fault of exchanging batteries and the immaturity of inputting	Repair for Cost	Repair for Cost
	To exchange consumption goods including batteries	Repair for Cost	Repair for Cost
	Failures or damages due to other purposes than the original purpose of the product	Repair for Cost	Repair for Cost
	Failures or damages of purpose	Repair for Cost	Repair for Cost
	Failures or damages because entering passwords has been omitted or passwords have been forgotten	Repair for Cost	Repair for Cost
	Product damaged because of not carrying an emergency manual key	Repair for Cost	Repair for Cost
	<b>Failures or damages due to a fire or natural disasters</b>	Repair for Cost	Repair for Cost
<b>Malfunctions due to condensation and moisture and improper operations due to poor installation</b>	Repair for Cost	Repair for Cost	

## Warranty Card(for Company)

Thank you very much for purchasing  
HYUNDAI TELECOM.CO., LTD.'s digital door lock.  
The quality assurance period is counted from the date of purchase.  
Therefore be sure to have the date specified for sufficient service.

<b>Consumer Name</b>	
<b>Telephone</b>	
<b>Model Name</b>	
<b>Serial Number</b>	
<b>Term of Guarantee</b>	
<b>Address</b>	
<b>Installation Agency</b>	
<b>Telephone</b>	
<b>Address</b>	

- This product is produced by the thorough quality management.
- In case any troubles occur in the state of normal use within the warranty period, you can receive A/S for free.
- You are required to fill up the address, name and telephone number on the warranty card in time of buying the product and to keep the card well, and if otherwise, you need to pay for repair.

### WELLIV DW JSC (NPP CHÍNH THỨC TẠI VIỆT NAM)

Showroom:LKC26, Hoang Minh Thao Street, Tay Ho Tay Urban Area, Bac Tu Liem District, Hanoi,Vietnam.

Web:<https://hyundaiht.vn>

Fanpage: Hyundai HT Vietnam Officer Partner

Hotline: +84-986-758-828

Email: [pl-quang@hyundaiht.vn](mailto:pl-quang@hyundaiht.vn)