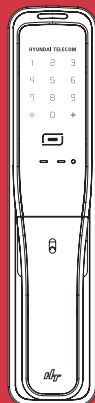




**HDL-7390SK**

Opening method : 4-Way  
Password + Card +  
Fingerprint + Mechanical key



**HDL-7300SK**

Opening method : 3-Way  
Password + Card +  
Mechanical key

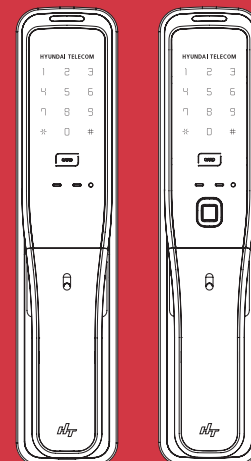
- You are kindly recommended to install the anticrime devices for the better and stronger security.
- It's prohibited to dismantle, assemble and process the door lock with other purposes than installation and construction without a prior written approval from this company.
- It's possible to change the products and their manuals without prior notice in order to upgrade their performance.

Made in KOREA **CARD**

# Digital Door Lock User Manual

## New Standard of Premium Digital Doorlock

It's hoped that you use the products after reading carefully the manual. It's possible to change some parts of function without prior notice to users in order to improve the products's performance.



**HDL-7300SK**

**HDL-7390SK**

**A convenient digital door lock**

# HDL-7300SK HDL-7390SK

Premium Smart Digital Doorlock  
New Concept PUSH PULL Digital Doorlock

**Be sure to make door open manually in emergency case**

**This product can be damaged when the door lock gets broken**



**CAUTIONS**

- To receive our full warranty services, please make an entry of all the items in a quality assurance.
  - If you do not make the entry, you must pay even during our warranty period.
  - In the event of malfunctions due to condensation and moisture, you must pay for warranty services.
- ※ **Our warranty service center operates from 08 a.m. ~ 24:00.**
- ※ **For problems due to condensation or with installation, you must pay for the services.**
- ※ **In the event you have forgotten passwords, or have lost a card /a manual key, you must pay for the services.**



**Door-opening function with the use of password, fingerprint, card**

You can use your password and card key conveniently and freely make settings and changes.



**Make door open manually in emergency case**

When the lock does not operate due to discharged batteries or a circuit problem, you can use the mechanical key.



**External double locking device**

While you are out for long hours, operation of the indoor buttons can be stopped, through which theft through the milk drop is prevented.



**Alarm function in case of housebreaking and theft**

If a wrong password is entered 3 or more times, all the operation is stopped for 30 seconds, and forced door-opening results in an alarm sounding.



**Connection to home network system (optional)**

Door-opening is possible indoors through a connection to the remote controller or wireless transmitter.



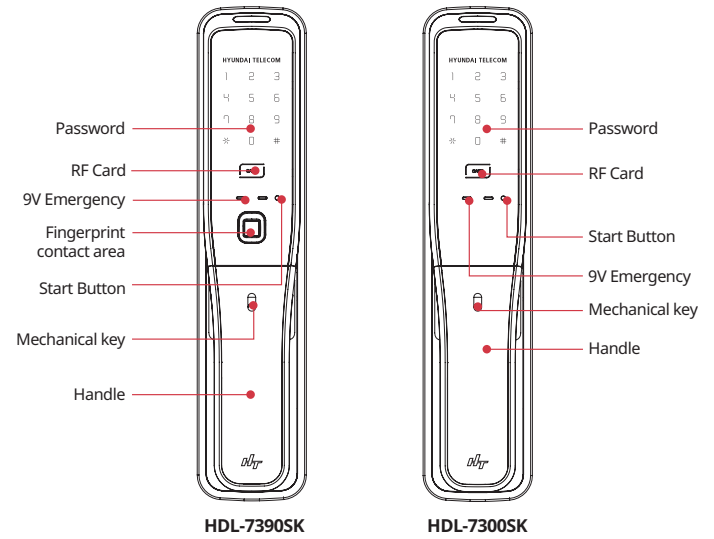
**Fire safety function**

It operates at a certain heat(around 65 degree Celsius) in case of fire, which may somewhat vary by installation environment.

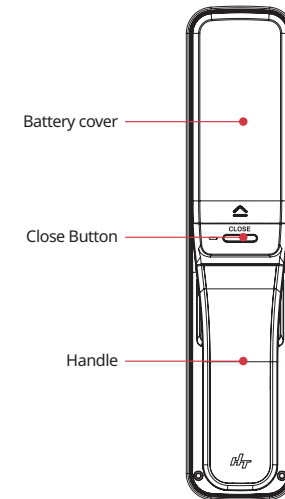


**Self-diagnosis function**

The door lock itself diagnoses defect, and informs you of malfunction or the battery change time through the alarm.



**Main Key(OUT)**



**Main Key(IN)**

## Contents

- General Information · 3
- Precautions · 4
- How to use · 5
- Product specification · 12
- Quick Manual · 13
- Warranty Service for Product Defects · 14
- Warranty Card(for Company) · 15

Please read the precautions thoroughly for your safety!



## You should not dismantle randomly the product

- The digital product is assembled minutely and complicatedly in the inside.
- The random dismantlement may be dangerous besides making the troubles of the product.
- Consumer's responsibility in case of random dismantlement .



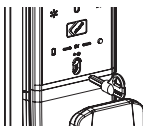
## Prohibition of water cleaning

- It's prohibited to clean with water because water cleaning may disturb an electronic circuit.
- It's hoped that a dry towel is used for cleaning the product.



## The response measures to electric discharge of battery are as follows

- The usage period of battery is at most four months to eight months. (Based on the use of ten times a day)  
Exchange the battery at that time.
- Use 4 alkaline batteries of 1.5v AA. (Rechargeable batteries unusable)
- In case of full discharge, it's possible to open the door with fingerprint, touch-key and password with linking 9V alkaline battery to outdoor body terminal.



## Using the Mechanical key

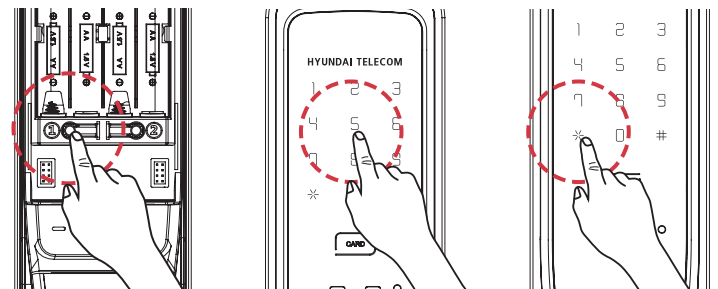
The mechanical key is used when the lock does not operate due to discharged batteries or a circuit problem.

Insert the key into the keyhole and rotate it to the right or left to lock to unlock the lock.



1. Always carry one or more mechanical keys, or store one in a secret place outside.
2. If the mechanical key is lost, it is recommended to replace the whole key cylinder unit. Contact your local dealer. Replacement of the key cylinder unit is not a free service.
3. Remove the mechanical key from the keyhole after the lock has been released, and store it in a safe place.

## 1. Password registration method



- 1 Open the battery cover on the indoor unit of the door lock (the indoor unit) with the door open, and press the registration button ① on the left bottom side.
- 2 Enter the numbers you want on the number panel of the front unit. (3-12 digit numbers possible)
- 3 When you press "\*" a notification sound (sounding "ppirirk") will be heard and register next passwords in order(Max 5.)

### After password registration, make sure it works

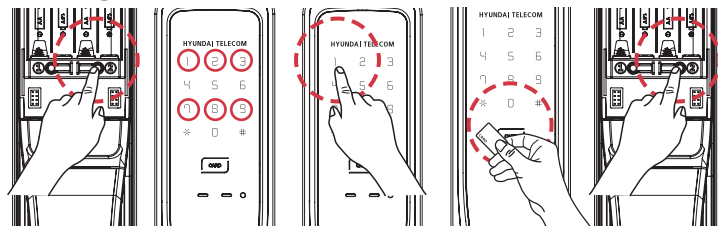


1. When you register passwords for the first time or change them, the door may be locked by mistake. Make sure to open the front door and carry an emergency key, card, with you.
2. For the passwords, specify the 3-12 digit numbers except for "\*" and "#"
3. If you enter new passwords, the existing ones will be deleted.
4. When all products are delivered, their passwords are set into 1, 2, 3, 4 and 1, 2, 3, 4, 5, 6, 7, 8, 9, 0.
5. When you install a product for first time, make sure the user enters the passwords himself/herself.

## 1-1. One time password registration method

- 1 Press the Start button for 3 sec with the door close, and the number pad will be lit.
- 2 Enter the current password and "\*".
- 3 Enter the one time password and "\*".
- 4 After you use the one time password, this password will be deleted.

## 2. Card registration method

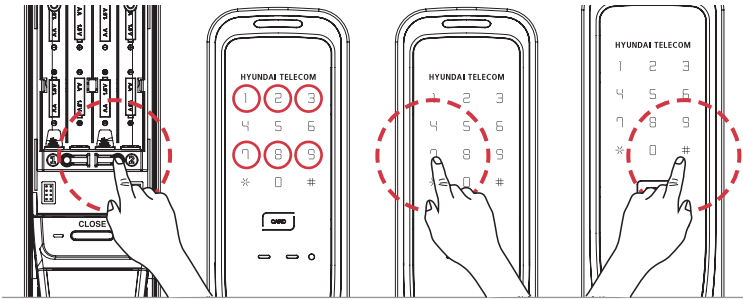


- 1 Open the battery cover on the indoor unit of the door lock (the indoor unit) with the door open, and press the registration button ② on the right bottom side.
- 2 On the screen, the numbers 1, 2, 3, 7, 8, 9 are lit.  
(If transmission module isn't connected, only 1, 3, 7, 8, 9 are lit)
- 3 Press "1" - the numbers are blink on the screen.
- 4 Hold the card near the reader. (continuous registration possible), (Max. 50 cards)
- 5 Press the registration button ② on the indoor unit. (the card registration finished)  
After card registration, make sure it works.



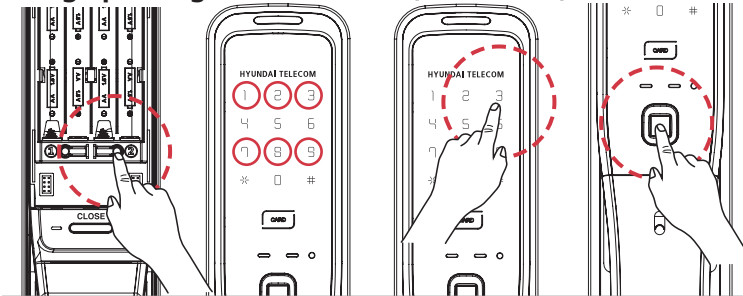
For your safety, we recommend you to use all RF-card and Tag that manufacturer provide with. HYUNDAI TELECOM confirms that "ISO 14443 Type A" certified RF-card and Tag to be used with the Digital door locks. We, HYUNDAI TELECOM, are not responsible with the cases that customers use other type RF-card and Tag, credit card, Smart card and Mobile phone.

### 3. Deletion of all the cards registered



- 1 Open the battery cover on the indoor unit of the door lock (the indoor part) with the door open, and press the registration button ② on the right bottom side.
- 2 On the screen, the numbers 1,2,3,7,8,9 are lit. (If transmission module isn't connected, only 1,3,7,8,9 are lit)
- 3 Press "7" — on the screen, "#" is lit. (the card deletion ready)
- 4 When you press and hold "#" for 3 seconds, all the cards will be deleted, with a notification sound.

### 4. Fingerprint registration method (HDL-7390SK)

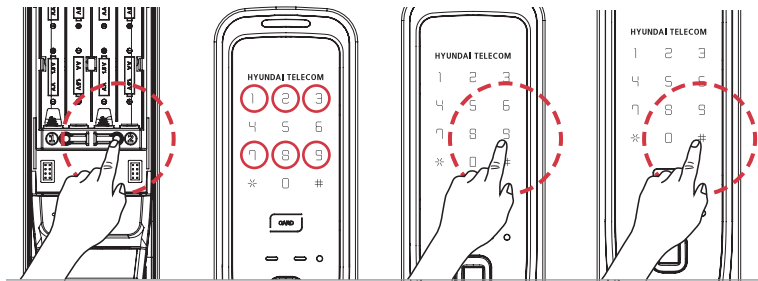


- 1 Open the battery cover on the indoor unit of the door lock (the indoor part) with the door open, and press the registration button ② on the right bottom side.
- 2 On the screen, the numbers 1, 2, 3, 7, 8, 9 are lit. (If transmission module isn't connected, only 1, 3, 7, 8, 9 are lit)
- 3 Press "3"-the fingerprint registration ready. (number is lit and then the numbers 1, 2, 3, 4 are lit)
- 4 As soon as the numbers blink, touch your fingerprint to the fingerprint reader. (a total of 4 times) (continuous registration possible), (Max. 100 fingerprints)
- 5 Press the registration number ② on the indoor unit. (the fingerprint registration finished)

※ Press the card registration button → Press "3" → Register the same fingerprint 4 times in a row as for the card registration button, you are advised to register the same one at several angles.

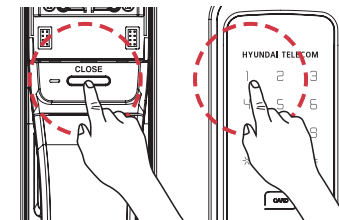
- ※ Since the Fingerprint Identification Digital Door Lock is used as an authentication means, it guarantees no risk of loss, theft, or hacking. Also this model uses a semiconductor method sensor so it is safe due to no residual fingerprint left on the sensor unit.
- ※ When you register your fingerprint, you must register it four times. This thus reduces an identification error to the maximum.
- ※ However, fingerprint registration may not be done, depending on the status of individual fingerprints.

### 5. Deletion of the whole fingerprint registered (HDL-7390SK)



- 1 Open the battery cover on the indoor unit of the door lock (the indoor part) with the door open, and press the registration button ② on the right bottom side.
- 2 On the screen, the numbers 1, 2, 3, 7, 8, 9 are lit. (If transmission module isn't connected, only 1, 3, 7, 8, 9 are lit)
- 3 Press "9" - on the screen "#" is lit.(the fingerprint deletion ready)
- 4 When you press and hold "#" for 3 seconds, the whole fingerprint will be deleted, with a notification sound.

### 6. Ways to set automatic locking / manual locking



- Beep beep sound - Auto Setting
- Beep sound - Manual setting
- ※ When products are delivered, they are set into Auto Lock.

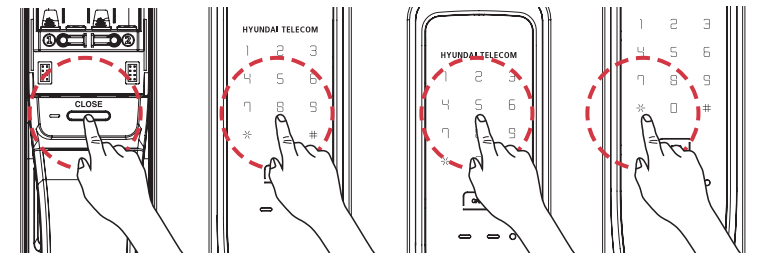
#### How to set into automatic lock

Press the CLOSE button for more than 5 seconds and press the number "1" button. Then, a Beep beep sound comes out and the system is set into auto Lock.

#### How to set into manual lock

Press the CLOSE button for more than 5 seconds and press the "1" button. Beep sound comes out and the system is set into manual lock.

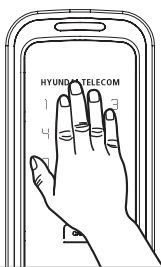
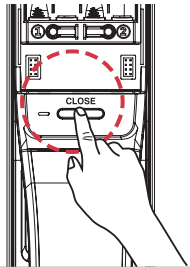
### 7. Automatic locking time setting change method



#### How to set automatically closed time

Press and hold the Close button for at least 5 seconds, a notification sound is heard, press "8" first, press the number you want to set among the number "1"~"8"("5" for 5 seconds), and press "\*".

## 8. Way to lock the door manually

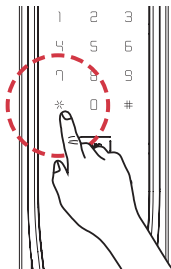
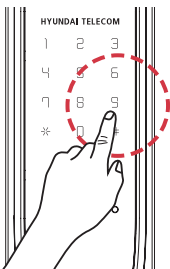
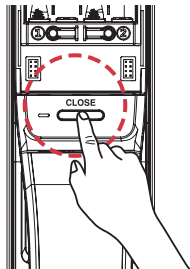


**Door close inside**  
Press CLOSE button

**Door close outside**  
Close the door and place your palm on numeric button

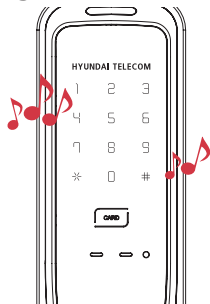
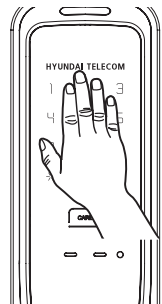
With releasing Auto-door close function, door does not close automatically and follow up as above

## 9. High-pitched / Low-pitched sound change



- 1 Press and hold Close on the indoor unit for at least 5 seconds.
- 2 Whenever pressing "9" on the outdoor part, the sound will change by level, from silence to a high-pitched sound.
- 3 Until the pitch wanted is heard (a total of 8 levels), press "9" and then "\*".

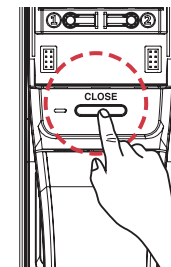
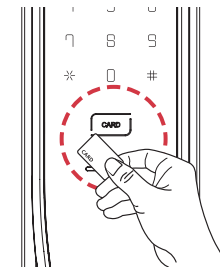
## 10. Forced locking function



**Force lock from outside**  
Close the door and place your palm on numeric button for 3 sec then the number pad blink 3 times and this function is setup with "biririk" sound. This is double lock when you leave home for a long time and inside buttons are not working.

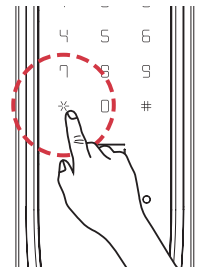
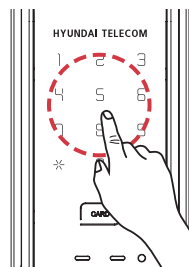
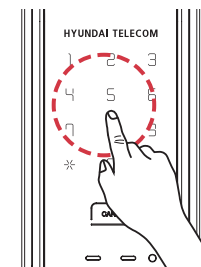
- ▶ When "Force lock from outside" activated, CLOSE button is not working.
- ▶ When "Force lock from outside" activated, it gets deactivated if you pull or push the handle from inside.
- ▶ When "Force lock from outside" activated, you can open the lock with password or Card.

## 11. Way to open the door



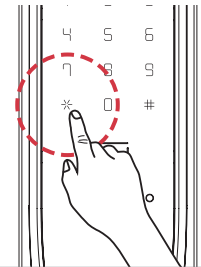
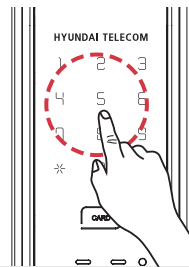
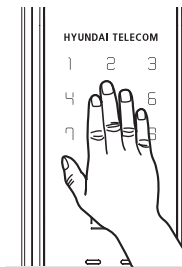
**Door open in house**  
Press CLOSE button or pull or push the handle to open the door

**Door open with RF card**  
Place RF card on door lock front and lock is opened with melody



### Opening with the existing fake password

- 1 It is possible to use the fake number function for the front digit. Lastly, enter the password and "\*".
- 2 The number of digits must not be over 20.



### Opening door with password from outside

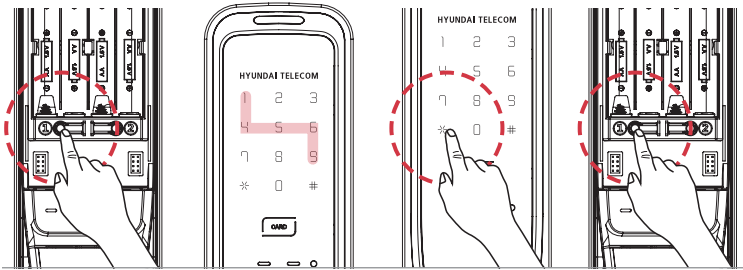
Place hand on keypad or press Start button to lighten keypad. Press registered password and press "\*" or "#" to open door.

### Manner Mode

Pressing Start button will activate manner mode, and door will open with no configuration alarm. (Auto-setting to non-manner mode after door opening)

※ When password is consecutively wrong for 5 times, warning alarm is notified and external button stops for 30 seconds.

## 12. Pattern register / editing method (In pattern mode setting)



- 1 Open battery cover in the inner main body and press ① Register button.
- 2 Drag a pattern on keypad using numbers 1-9. (4-12 digits)
- 3 Press "\*" and re-draw pattern(double check).
- 4 Press ① Register button to complete registration.

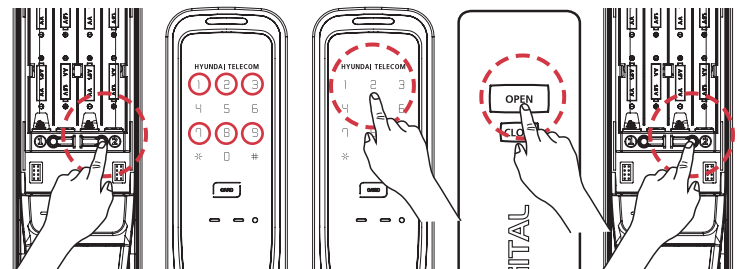
### Password / Pattern mode setting (editing) method

- ※ Leaving door open, press CLOSE button for 3 seconds. Press number 2 on keypad then you can hear configuration alarm.
- ※ All numbers on keypad will lighten up in password using mode.
- ※ 0, # will not lighten up during pattern mode.
- ※ Diagonal drag pattern is not available.
- ※ If pattern mode is configured, a new pattern must be newly registered.
- ※ If password mode is configured, the password must be newly registered.
- ※ Pattern and password cannot be used simultaneously.

### Opening door with pattern

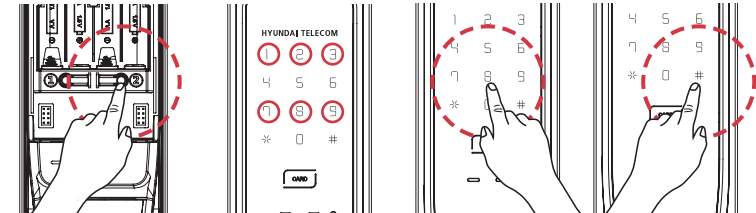
- ※ Touch keypad to lighten up numbers. Drag registered pattern to open door.

## 13. Registration of remote controller (Communication device) (Optional)



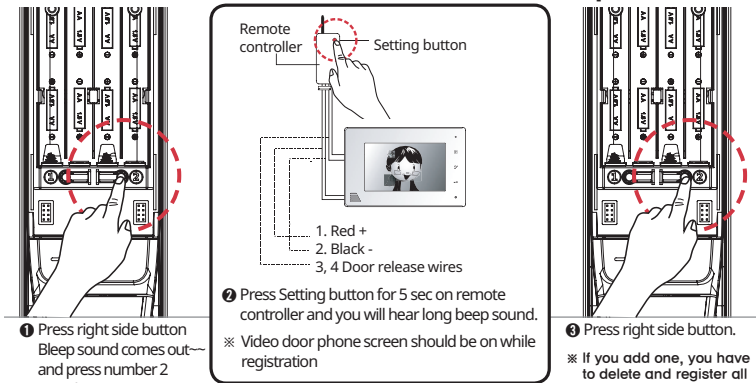
- 1 Open the battery cover on the indoor unit of the door lock (the indoor part) with the door open, and press the registration button ② on the right bottom side.
  - 2 On the screen, the numbers 1, 2, 3, 7, 8, 9 are lit. 3 Press "2".
  - 4 Press the "OPEN" button of remote controller. (continuous registration possible)
  - 5 Press the registration button ② on the indoor unit (the remote controller registration finished).
- ※ You can register up to 3 remote controllers
  - ※ If you add one, you have to delete and register all in order

## 14. Way to delete all the remote controllers (Communication devices) (Optional)



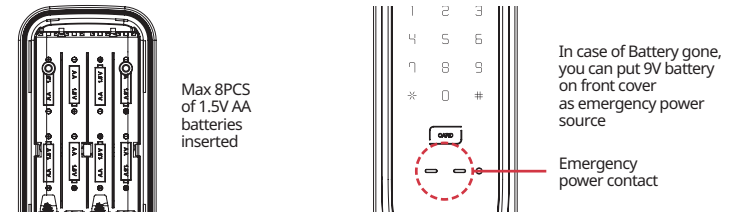
- 1 Open the battery cover on the indoor unit of the door lock(the indoor part) with the door open, and press the registration button ② on the right bottom side.
- 2 On the screen, the numbers 1, 2, 3, 7, 8, 9 are lit.
- 3 Press "8" on the screen, "8" is lit(the remote controller deletion ready)
- 4 When you press and hold "#" for 3 seconds, all the remote controllers will be deleted, with a notification sound.

## 15. Way to register wireless transmission / reception communication device module for door lock (Optional)



- 1 Press right side button Bleep sound comes out-- and press number 2
- 2 Press Setting button for 5 sec on remote controller and you will hear long beep sound.
  - ※ Video door phone screen should be on while registration
- 3 Press right side button.
  - ※ If you add one, you have to delete and register all in order (Include remote controller)

## 16. Battery replacement method



1. **Battery life time** : 4M to 8M upon 10times using a day.
2. **Battery change alarm** : Blinking red lights with melody. Open battery cover and replace all 4PCS of 1.5V AA at once. Make sure its polarity.
3. **Emergency power supply** : After battery is fully discharged, place 9V battery on emergency power contact and open the door with password or RF card.

HDL-7300SK □ / HDL-7390SK □

Item	Specification of HDL-7300SK, HDL-7390SK				
Rated Voltage	4ea 1.5V(LR6)AA alkaline batteries(6V)				
Emergency Power Source	1ea 9V battery(6LF22)(sold separately)				
Operation Method	Electronic control(entering password or reading card key)				
Weight	2.95kg(including the outdoor and indoor units)				
Dimensions	Indoor unit	80mm(W) X 367mm(H) X 71mm(D)			
	Outdoor unit	81mm(W) X 367mm(H) X 69mm(D)			
Item	Usable Frequency	Type of Radio Wave	Type of Radio Wave	Type of Radio Wave	Power Supply
RFID	13.56MHz	A1D	ASK	Single	DC 6V (1.5V AA X 4EA)
Self-Regulatory Safety Confirmation Certificate No.	B223H006-6003				
Type and Symbol	F-T-K-M				
Certification No.					
Model	HDL-7300SK HDL-7390SK	Country of Manufacture		Made in KOREA	
Vendor	HYUNDAI TELECOM CO., LTD.				
Date of Production Year	Year :		Month :		

- ※ You are recommended to use this device (a Class B device registered for EMC(Electromagnetic Compatibility)) chiefly at home.
- ※ Any of the details of the manual can be changed without notifying you in advance for improvement of the product functions. (a sticker will be used on the follow-up model for any change)

Function	How to	Ready
<b>Password Change</b>	Press the left button ➡ Press password(3-12 Digit) ➡ Press the “*” button	Keep door open and open battery cover. There are 2 buttons. (Right and Left)
<b>Card Registration</b>	Press the right button ➡ Press the “1” button ➡ Tag Card in Order ➡ Press the right button	
<b>Fingerprint Registration (HDL-7390SK)</b>	Press the right button ➡ Press the “3” button ➡ Touch your fingerprint 4 times ➡ Press the right button	
<b>Card Deletion</b>	Press the right button ➡ Press the “7” button ➡ Press the “#” button for 3 sec	
<b>Fingerprint Deletion (HDL-7390SK)</b>	Press the right button ➡ Press the “9” button ➡ Press the “#” button for 3 sec	Keep Door Open
<b>Auto / Manual Lock</b>	Press the “CLOSE” button for 3 sec and Press “1” button	
<b>Password / Pattern Mode</b>	Press the “CLOSE” Button for 3 sec and Press “2” button	
<b>Double Checking to Unlock</b>	Press the “CLOSE” button for 3 sec and Press “3” button (To open the door, you have to enter the password + Card or Password + Fingerprint)	
<b>Double Checking to Register</b>	Press the “CLOSE” button for 3 sec and Press “7” button (To register new password /card, press left/right register button ➡ enter current password and “*” ➡ enter new password/place card on card reader in order ➡ press “*” to end registration)	
<b>To Set the time for Auto Lock</b>	Press the “CLOSE” button for 3 sec and Press “8” + Press the number “2” (Changed into 2 sec)	
<b>To Change a sound into Low / High</b>	Press the “CLOSE” button for 3 sec and whenever Pressing “9”, the sound will change by level	

## Warranty Service for Product Defects

Damage types		Compensation items	
		Within warranty period	After warranty period
<b>State of Normal Use</b>	In case the troubles occur within 12 months after installation	Repair for free	Repair for Cost
	In case the same troubles occur two times	Repair for free	Repair for Cost
	In case the same troubles occur three times	Product replacement	Repair for Cost
	In case there is no any parts for repair	Product replacement	Product replacement (Limited to flat-rate depreciation)
<b>Intention or Fault of Consumer</b>	In case of an official trip because of consumer's mistake including the fault of exchanging batteries and the immaturity of inputting	Repair for Cost	Repair for Cost
	To exchange consumption goods including batteries	Repair for Cost	Repair for Cost
	Failures or damages due to other purposes than the original purpose of the product	Repair for Cost	Repair for Cost
	Failures or damages of purpose	Repair for Cost	Repair for Cost
	Failures or damages because entering passwords has been omitted or passwords have been forgotten	Repair for Cost	Repair for Cost
	Product damaged because of not carrying an emergency manual key	Repair for Cost	Repair for Cost
	<b>Failures or damages due to a fire or natural disasters</b>	Repair for Cost	Repair for Cost
<b>Malfunctions due to condensation and moisture and improper operations due to poor installation</b>	Repair for Cost	Repair for Cost	

## Warranty Card(for Company)

Thank you very much for purchasing  
HYUNDAI TELECOM CO., LTD.'s digital door lock.  
The quality assurance period is counted from the date of purchase.  
Therefore be sure to have the date specified for sufficient service.

<b>Consumer Name</b>	
<b>Telephone</b>	
<b>Model Name</b>	
<b>Serial Number</b>	
<b>Term of Guarantee</b>	
<b>Address</b>	
<b>Installation Agency</b>	
<b>Telephone</b>	
<b>Address</b>	

- This product is produced by the thorough quality management.
- In case any troubles occur in the state of normal use within the warranty period, you can receive A/S for free.
- You are required to fill up the address, name and telephone number on the warranty card in time of buying the product and to keep the card well, and if otherwise, you need to pay for repair.

### WELLIV DW JSC (NPP CHÍNH THỨC TẠI VIỆT NAM)

Showroom:LKC26, Hoang Minh Thao Street, Tay Ho Tay Urban Area, Bac Tu Liem District, Hanoi,Vietnam.

Web:<https://hyundaiht.vn>

Fanpage: Hyundai HT Vietnam Officer Partner

Hotline: +84-986-758-828

Email: [pl-quang@hyundaiht.vn](mailto:pl-quang@hyundaiht.vn)