

Written by Hwang, SY	Approved by Lee, JH	Doc. No. AA35MIxxxx	Revision REV.00	Page 1/10
Doc. Manager	Reviewed by Lee, JH	Date 2019. 07. 05.	File / Reference	
Title HNF-I5102 (Sub) Installation Guide				

HNF-I5102 (Sub) Installation Guide

- Contents -

1. Product Overview
2. System Configuration
3. Main Unit connection description
4. How to connect Wall Pad
5. Installation of other devices

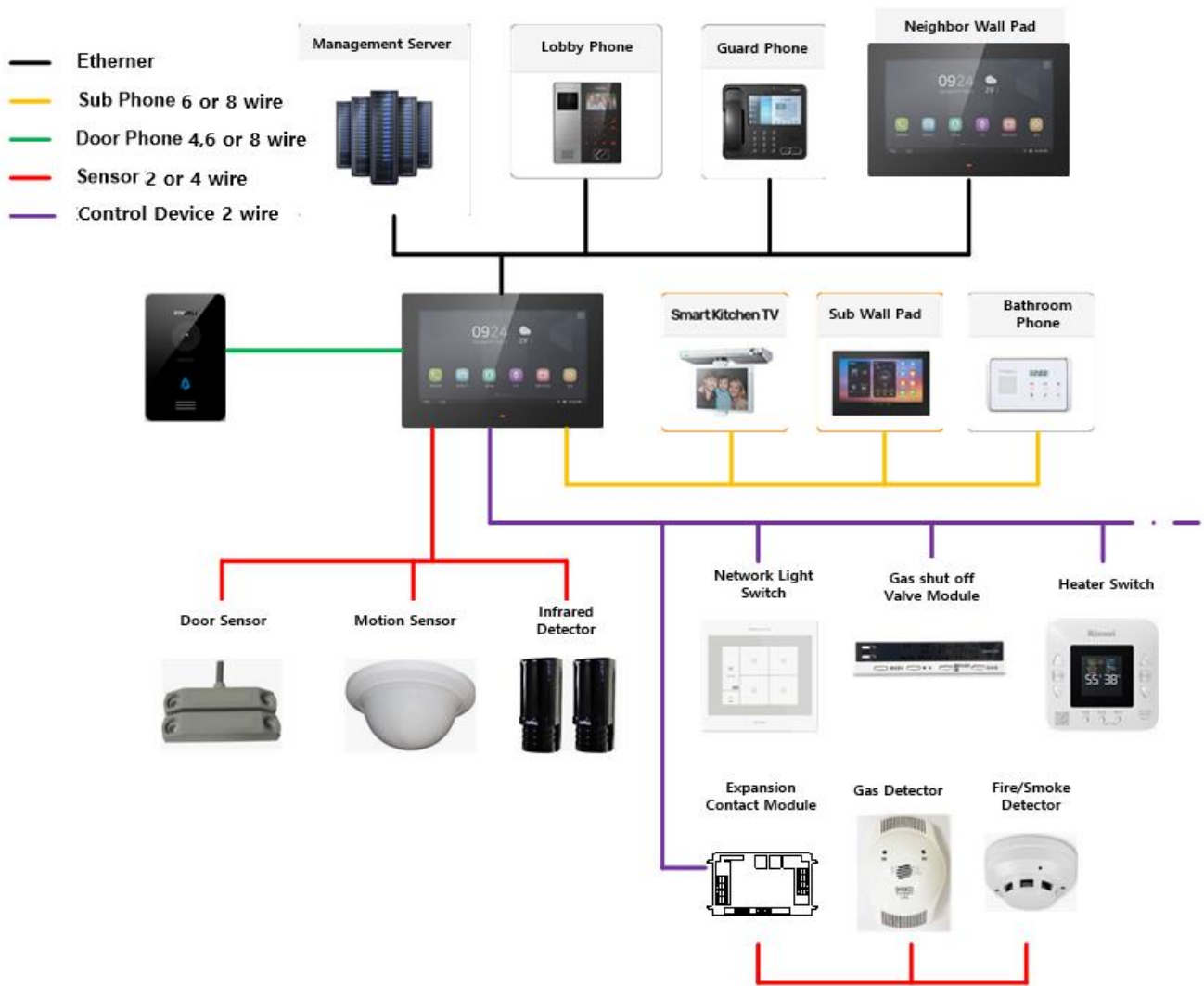
<p>HYUNDAI HT Co., Ltd.</p>	<p>Date: 2019. 07. 05.</p>	<p>Doc. No.: AA35MIxxxx</p>	<p>Revision REV.00</p>	<p>Page 2/10</p>
------------------------------------	--------------------------------	---------------------------------	----------------------------	----------------------

1. Product Overview

HNF-I5102 is Android OS based ALL LAN type Wall Pad featured with a 10.1 wide digital LCD screen and a capacitive full touch panel. It can be connected with lobby phones/guard phones and control other devices by a local management server.

The main functions of HNF-I5102 are calling to guard phone, lobby phone, door phone, sub phone, and triggering and notifying an alarm when an abnormal situation is detected. It also can control wired devices such as light switch and third party systems such as CCTV, parking control system on the screen.

2. System Configuration

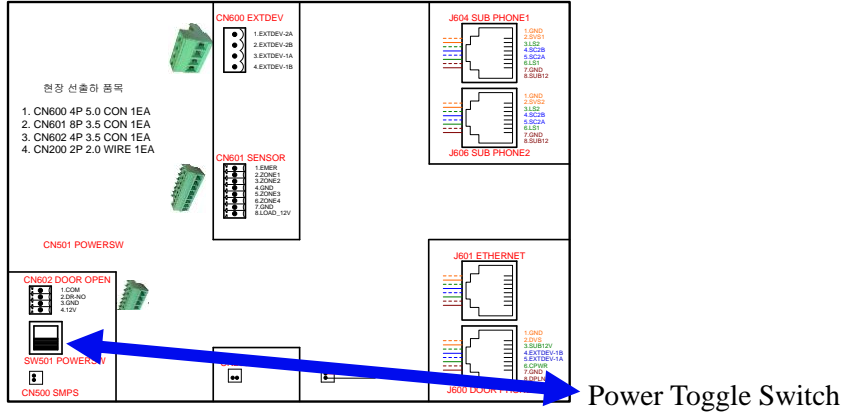


HYUNDAI HT Co., Ltd.	Date: 2019. 07. 05.	Doc. No.: AA35MIxxxx	Revision REV.00	Page 3/10
-----------------------------	------------------------	-------------------------	--------------------	--------------

2.1 Terminal Unit Description

2.1.1 HNF-I5102 Sub Unit

- HNF-I5102 Sub Basic Model



DC Main Power On/Off Switch.

When DC is initially turned on and DC 12V is supplied to this, it turns on automatically.

(It turns on if the power failure returns.)



Pressing the tact switch for longer than 1 second will turn the device off with a message 'Ending'.

If S/W is not shutting down due to malfunction, the device will turn off after 10 seconds.

The device will turn on by pressing the tact switch for longer than 1 second when it's off.

2.1.2 Terminal Unit

- Terminal Unit is not applied / All in one type

2.1.3 ANY122A5C-NIH POWER

- The power supply receives AC220V (AC110-240V Free Voltage) power input and outputs a voltage of DC 12V/2.5A to supply a DC12V voltage to the wall pad.
- It has an efficiency of 70% or more using the SMPS, a FUSE is built in to protect the device when overvoltage is input, and an overcurrent protection circuit is configured in which the output voltage is lowered when overcurrent is used at the output terminal.
- **(CAUTION) Use SMPS with a capacity that meets the site requirements.**
- **(CAUTION) When installing the power supply, the protective ground terminal must be**

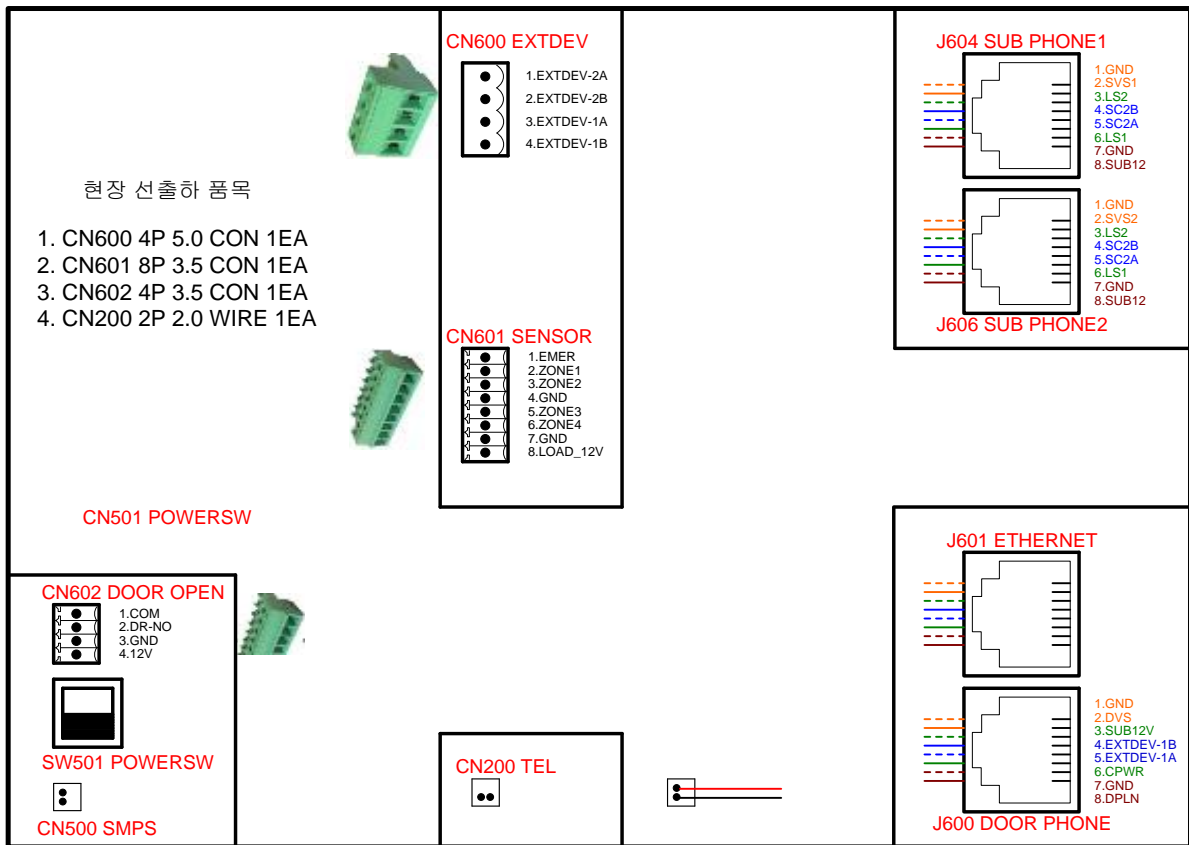
permanently connected to the ground.

2.2 The type of device unit

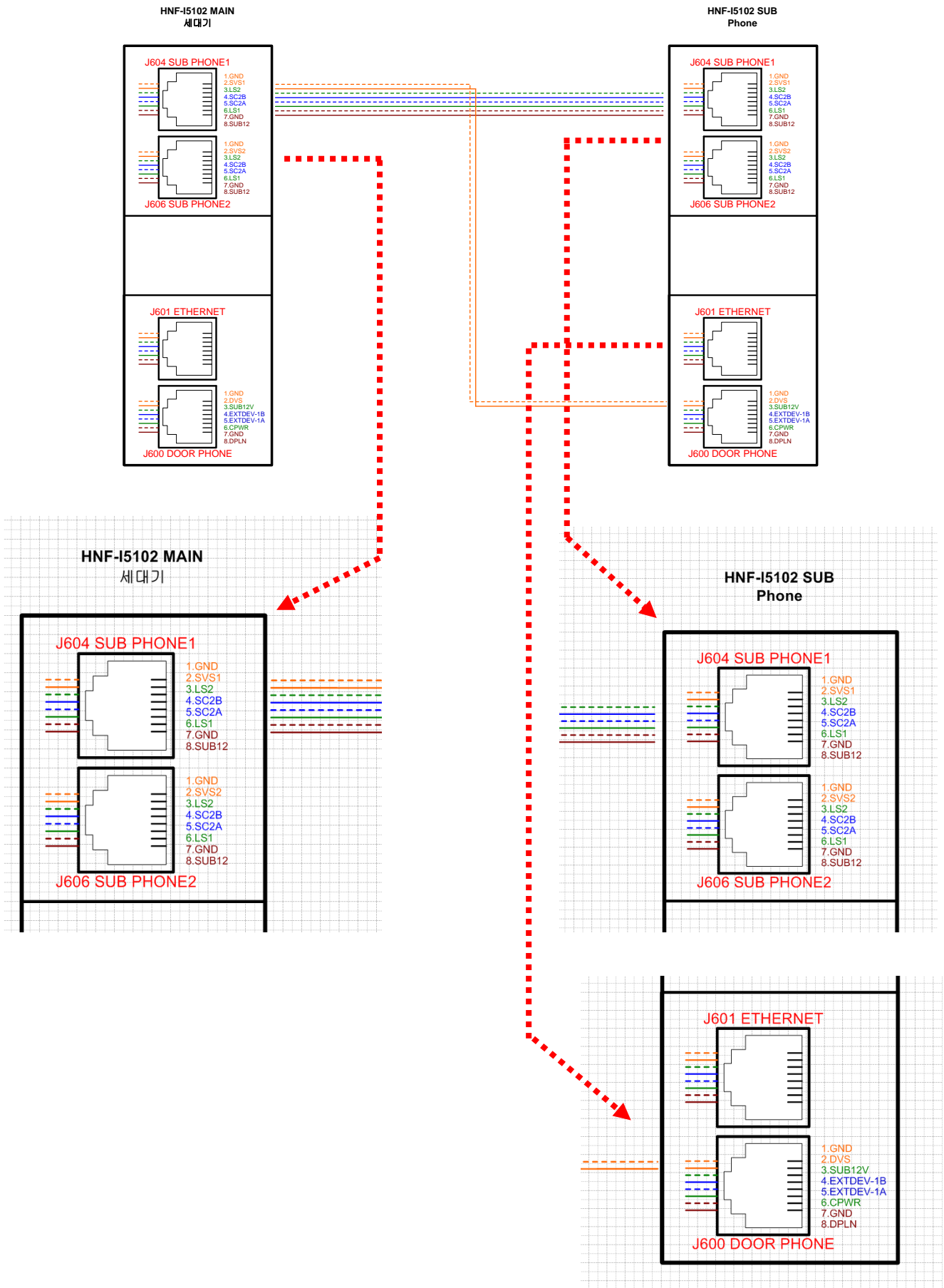
Unit	Model No.	QTY	Remark
MAIN UNIT	HNF-I5102 SUB PHONE	1SET	HA-room BUS type
TERMINAL UNIT	N/A	-	Included on the Main Unit
POWER UNIT	ANY122A5C-NIH	1SET	DC 12V/2.5A

3. The description of the Main Unit Terminal Connection

3.1 HNF-I5102 sub phone rear terminal block diagram



HNF-I5102 SUB PHONE connection diagram



3.2 Terminal Block Description (J604 / J600)

Classification	Name	Use	Standard	Remark
Bathroom Phone, Kitchen TV Phone Connection	-	nonuse	CAT.5e UTP-4Pair TIA/EIA-568B	
	-			
	LS1	Sub-Phone Call Line		
	SC2B	Sub-Phone Communication Line		
	SC2A	Sub-Phone Call Line		
	LS2	Common Power GND		
	GND	Power for Sub-Phone		
Camera, Door Phone Connection	SUB12V		CAT.5e UTP-4Pair TIA/EIA-568B	
	V-GND	Power for Camera (GND)		
	DVS	Door Phone Video		
	-	nonuse		
	-			
	-			
	-			
	-			

* CPEV-Φ0.65 can be replaced as CAT.5eor upper UTP line if necessary.

3.3 The description of the terminal block (CN500, CN200)

- CN500: SMPS connect / Supply the power to Main Unit
- CN200: PSTN (Phone Line) connect / Tip, Ring(Non-polarity) connection

3.3 The description of pre-supplied item

- DPHNT-ACC-INT-004 // 2P 2.0mm pitch, 170mm – CN200, PSTN telephone (Tip, Ring) connection

3.5 Wiring to sub devices

3.5.1 Wiring to a telephone circuit

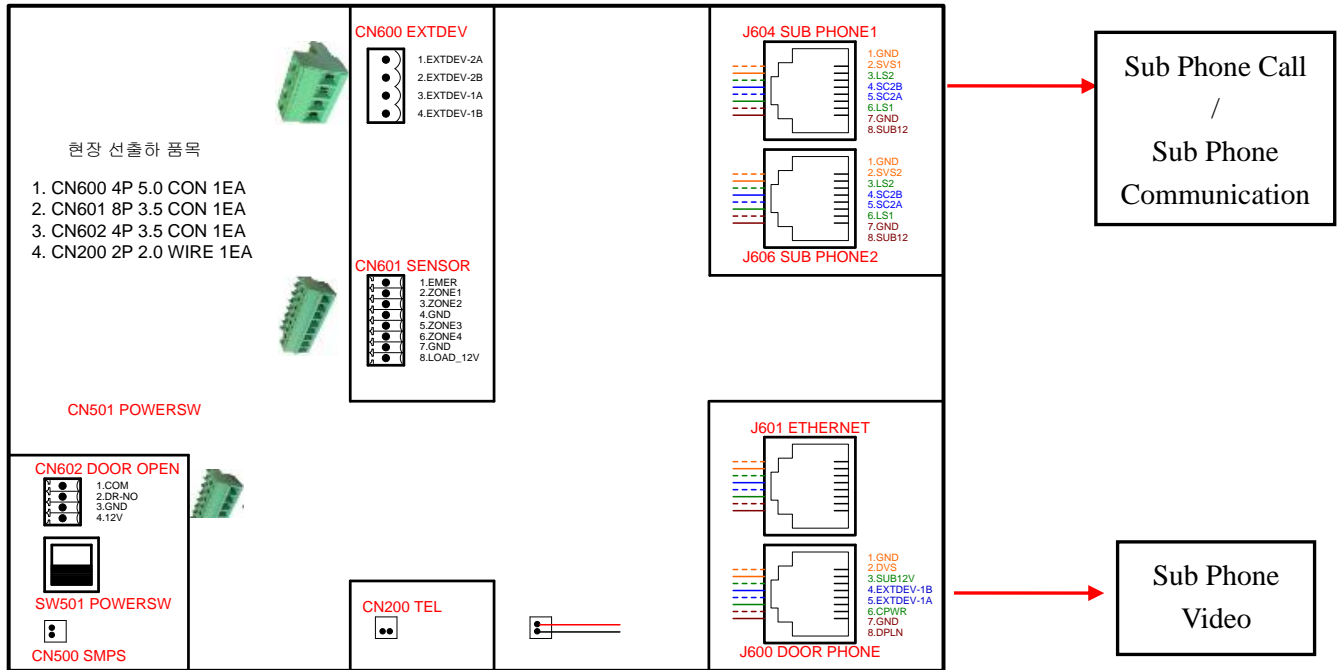
- Terminal: CN200 (Non-polarity)
- Connect a telephone circuit to TIP, RING with pre-supplied 2P Wire

3.5.2 ANY122A5C-NIH power UNIT connection

- Connect the WIRE ASS'Y(2P) of the power unit to the 2P CON (CN500) on the rear of HNF-I5102 sub phone

4. Wiring diagram of Wall Pad

4.1 The interface of HNF-I5102 and connection to the server



5. Installation of other devices

5.1 Installation Order

- 1) Select proper position for installing the device.
- 2) Install the back box for the device if necessary.
- 3) Do piping work for wiring between the back box and the device.
- 4) Complete to mold at wall.
- 5) Do wiring work according to the wire diagram.
(Wiring / Installing of every device. Must coil LAN Cable on Ferrite Core once.)
- 6) Test and demonstrate the system.

5.2 Installation Condition

- 1) Operating temperature of the system is 0°C~40°C. Recommended operating temperature / humidity is 18°C~26°C / 20% ~ 70%.
- 2) Avoid to be exposed to direct sunlight and keep clean the circumstance.
- 3) Be care not to get damp.
- 4) No magnetic materials and no devices affect to temperature / humidity are allowed near the system.
- 5) Choose the place where the distance between device is minimum considering the wiring.
- 6) The color of LCD screen can be displayed differently according to viewing angle. (Up 40°, Down 65°,

HYUNDAI HT Co., Ltd.	Date: 2019. 07. 05.	Doc. No.: AA35MIxxxx	Revision REV.00	Page 9/10
-----------------------------	------------------------	-------------------------	--------------------	--------------

Left 65°, Right 65°)

7) Check every wire condition before operating the device and connect AC110~240V power.
(Must connect power frame GND.)

5.3 The type of the back box

1) The back box of HNF-I5102

5.4 The position of the back box

1) The position of the back box for HNF-I5102

Choose proper position for MAIN UNIT on the wall of a living room or mater bed room.
(Recommended installation height: 1,300mm ~ 1,400mm)

2) Precaution

Ensure to exact balance of right and left to be parallel. Keep the front of the back box parallel to the surface.

5.5 The standard of Wiring

Purpose		Standard	Line	Remark
AC Power (System Operation)		KSC3302 Vinyl insulated wire IV Φ1.6 ~Φ2.0	3	
Call Line		TIV 0.8Φ	2	
Connection to Emergency Switch		TIV 0.8Φ	2	
Connection to Security Sensor		TIV 0.8Φ	2	
Connection to Motion Sensor		TIV 0.8Φ	4	
Connection to Door Phone	Call	TIV 0.8Φ	1	
	Video	EXC-3C/2V	1	
	Power	TIV 0.8Φ	2	
Connection to Server		CAT.5 UTP	4 Pair	ETHERNET
Bathroom Phone Kitchen TV Phone	Call	TIV 0.8Φ	2	
	Data	TIV 0.8Φ	2	
	Video	EXC-3C/2V	1	
	Power	TIV 0.8Φ	2	Power for Bathroom Phone

HYUNDAI HT Co., Ltd.	Date: 2019. 07. 05.	Doc. No.: AA35MIxxxx	Revision REV.00	Page 10/10
-----------------------------	------------------------	-------------------------	--------------------	---------------

5.6 The installation of the UNIT

5.6.1 Installation of ANY122A5C-NIH power UNIT.

Install it inside the back box by using Velcro Tape which is at the bottom of power UNIT.

5.6.2 Installation of HNF-I5102 main UNIT

- 1) Disconnect AC power in home before installation.
- 2) Connect other devices to MAIN UNIT with Pluggable Type Terminal and Wire Ass'y.
- 3) Put on MAIN UNIT on the back box and fix it with fixing screws.
- 4) After the installation of the system is complete, operate and demonstrate the system.