

작성자 여 영 구	승인자 이 정 훈	문서번호 AA35MIxxxx	변경코드 REV.00	페이지 1/12
문서관리자	검토 이 정 훈	년월일 2020. 11. 05.	파일/참조	
제목 HLPC-9006 설치시방서		Title Installation of HLPC-9006		

HLPC-9006 Installation Guide

- Contents -

1. Product Overview
2. Product Composition
3. System Configuration
4. Technical Specification
5. Product Description and Wiring Diagram
6. Connection Description
7. Installation and Precautions

현대통신(주)	년월일 2020. 11. 05.	문서번호: AA35Mlxxxx	변경코드 REV.00	페이지 2/12
---------	----------------------	---------------------	----------------	-------------

1. Product Overview

The HLPC-9006 product is adapted 10.1inch (1024X600) Wide Digital LCD based on Android OS. It is a lobby phone that transmits communication, call, and video signals using the TCP/IP. It is compatible with HT's IP type smart wall pad, HNF-I5102, HNF--I4102, and guard phone, HMS-N1070.

The main functions of the HLPC-9006 are calling the household and guard office, entering individual household passwords, access control through RF card / NFC / microwave Bluetooth module, auto slide entrance door control.

It also has the functions of opening and closing an auto slide door by receiving a fire contact signal (dry contact, wet contact) and wake-up LCD and key operation by receiving a motion detection signal.

2. Product Composition

2.1 Model: HLPC-9006

2.2 LCD: 10.1 Inch Color TFT LCD (1024 X 600)

2.3 Optional Specification: 13.56Mhz RF CARD READER

Built-in Bluetooth 4.2

24GHz microwave sensor

UNIT	Model	Q'ty	Remark
MAIN UNIT	CPU PCB	1SET	MAIN Controller
	BASE PCB	1SET	I/F Connector & System POWER
	KEY TOUCH PCB	1SET	KEY Front Touch
	KEY LED PCB	1SET	KEY Front LED
	IR LED PCB	1SET	IR SENSOR
	CAMERA	1SET	520K
	CARD READER	1SET	13.56 Mhz
	MICRO WAVE	1SET	24GHz
ADAPTOR	ANY122A5C-NIH	1SET	
WALL-BRACKET		1SET	

현대통신(주)	년월일 2020. 11. 05.	문서번호: AA35Mlxxxx	변경코드 REV.00	페이지 3/12
---------	----------------------	---------------------	----------------	-------------

B-BOX		1SET	
-------	--	------	--

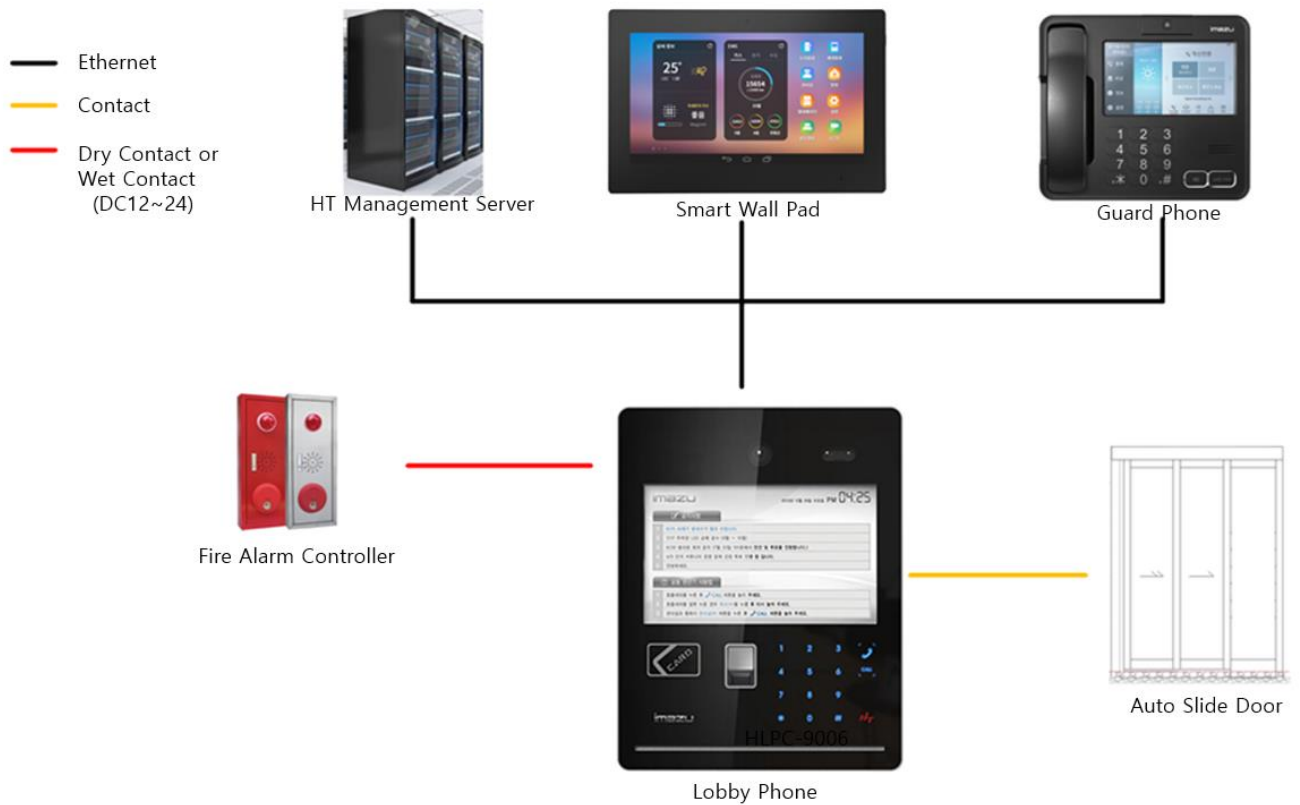
A. CARD READER

- It is a module that recognizes 13.56Mhz RF CARD to access control of visitors.

B. MICROWAVE SENSOR


- It is a module that detects the motion of an object through a 24GHz microwave sensor and access control of visitors by determining whether to register through the BLE module.

3. System Configuration



현대통신(주)	년월일 2020. 11. 05.	문서번호: AA35Mlxxxx	변경코드 REV.00	페이지 4/12
---------	----------------------	---------------------	----------------	-------------

4. Technical Specification

Image	Item	Specification	
	Power	DC12V Adaptor Adaptor Input: AC 220V, 50/60Hz	
	Power Consumption	Max 30W	
	Signal	TCP / IP	
	Size	270W× 344.9H× 17D	
	Weight	1.76 Kg	
	Environment	Temp.	-20°C ~ 50°C
		Humidity	20% ~ 70%
	Installation	Flush mounting	
	Operation	13 KEY Touch Button	
	Screen	10.1" TFT LCD	
	Accessibility Signal	Contact	
	Camera	Sensor	1/3" CMOS 520K
		Angle of View	92°
	RFID Reading Distance	3cm	
Microwave Reading Distance	5M		

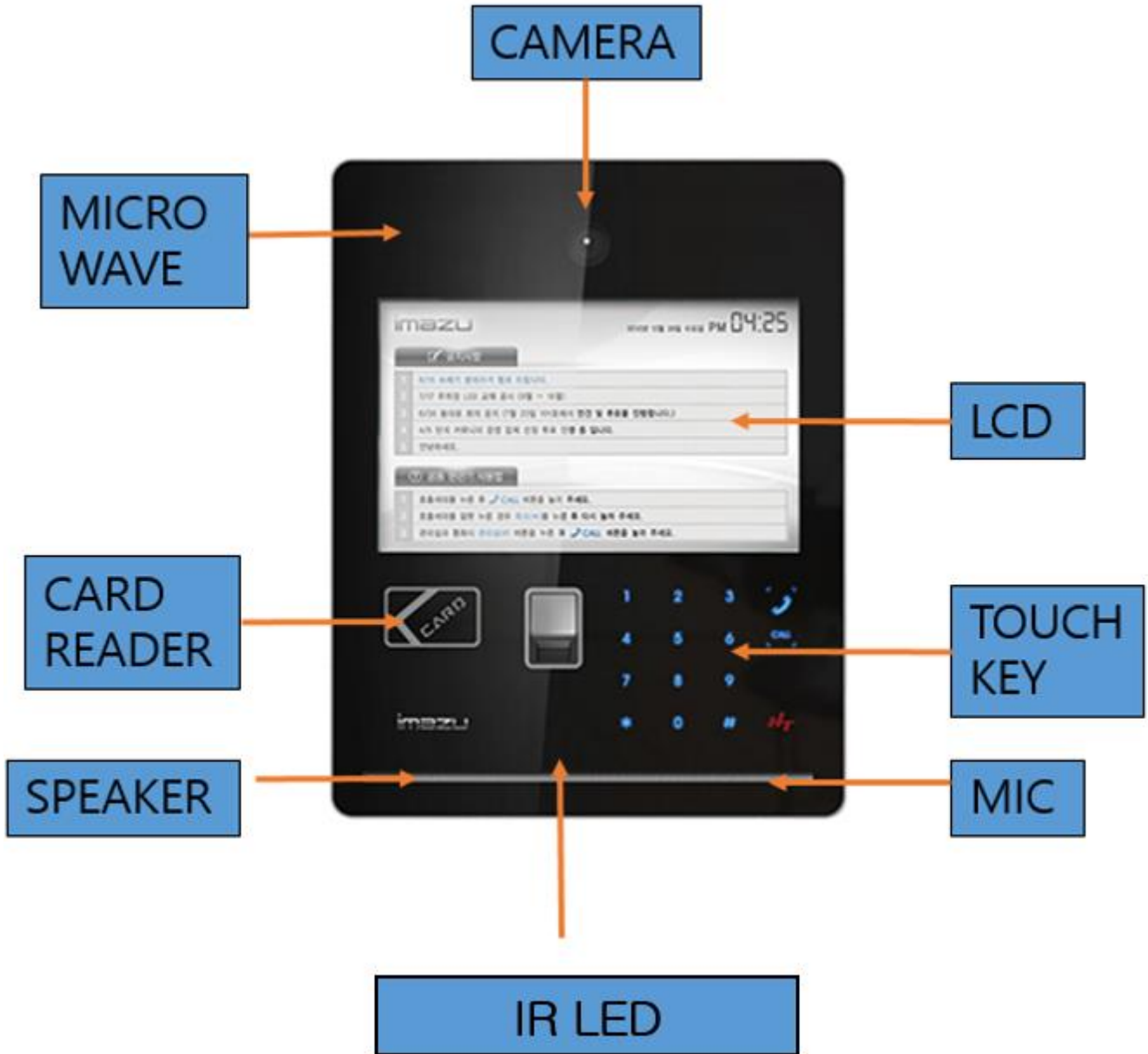
4.1 Power Adaptor - ANY122A5C-NIH POWER

- This is a power supply for a lobby phone, HLPC-9006 series, and get AC110~240V free Voltage input and outputs DC12V/2.5A voltage and supply DC12V to a lobby phone.
- It is an SMPS type and has an efficiency of more than 70% and built in a fuse to protect the device in case of overvoltage input and also built in the overcurrent protection circuit which down the output voltage when using overcurrent at the output stage.

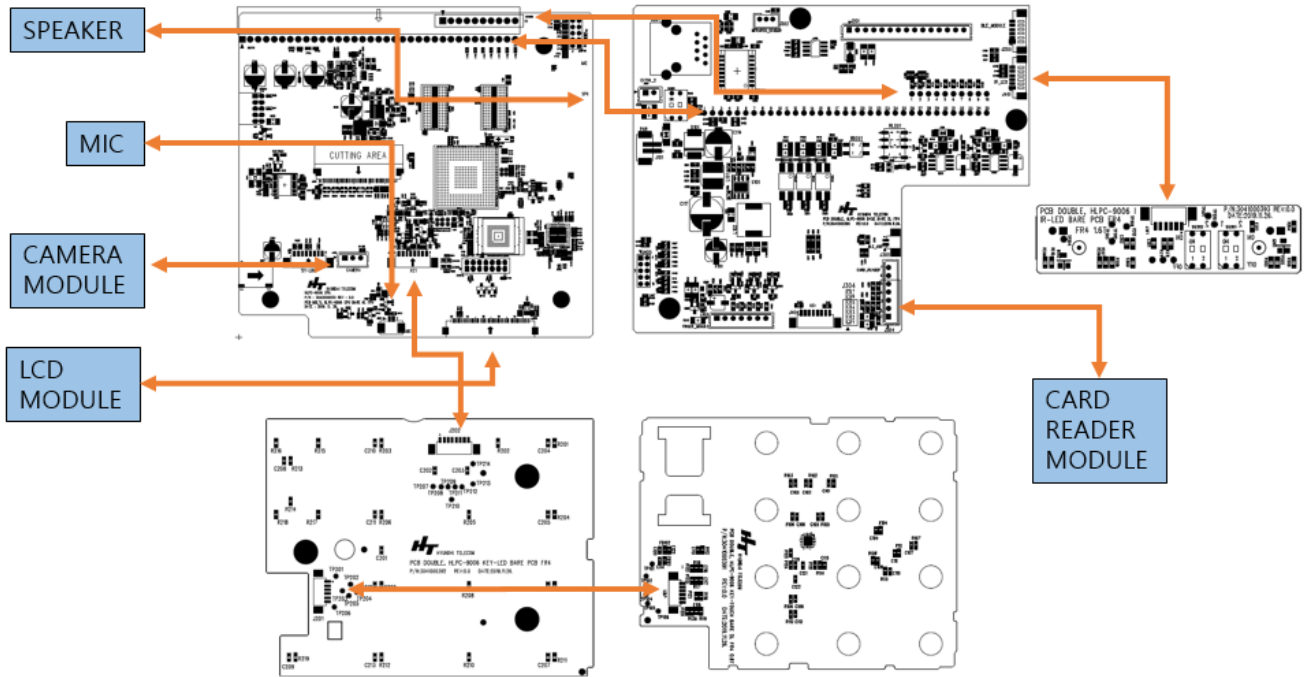
- (Precaution) Appropriate SMPS shall be used per a site.
- (Precaution) The protected ground terminal shall be connected to the ground connection permanently when you install a power.

5. Product Description and Wiring Diagram

5.1 Exterior Description



5.2 Interior Description

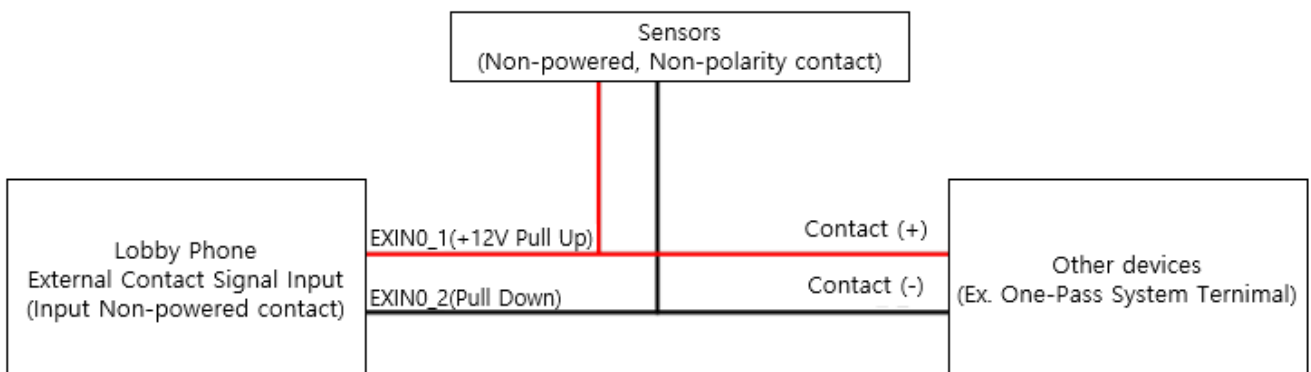


A. EXT I/P Connector (J201)

Item	Name	Description	Remark
Power Supply Terminal	AUX12V	12V Power Output(+)	Preliminary Power Port (Required to ask HT R&D Center in advance.)
External Contact Signal Input	EXIN0-1	Contact Signal Input Port	Preliminary Ports – Non-powered. (Required to ask HT R&D Center in advance) Required to be checked the polarity if you want to use other devices together.
	EXIN0-2		
External Voltage Signal Input	EXIN1-1	Fire Contact Signal Input 1-1(+), 1-2(-)	Power required (Non Polarity)
	EXIN1-2		
GND	GND	GND Connection	Preliminary GND
Lobby Phone Accessibility Control	DR-NO	Contact N.O	N.O/N.C Contact Type Control
	DR-NC	Contact N.C	
	DR-COM	Contact Common	
Connecting Device RS-485	485-1A	RS-485 (+)	RS485 Communication Port 1 (Polarity) – Card Reader
	485-1B	RS-485 (-)	
	485-2A	RS-485 (+)	RS485 Communication Port 2 (Polarity) – Preliminary Port
	485-2B	RS-485 (-)	
	GND	GND	Preliminary GND
Video Output Terminal	EXT-CAM	Lobby Video Output	Lobby Video for CCTV – Required terminating resistance (75Ω)

*** Precaution when using external contact signal input port. (EXIN0-1 / EXIN0-2)**

- If you connect the external contact device alone, it can be used with No Power, Non-Polarity contact
- If an external contact device is used with other devices together, it may be affected by the other device's polarity and power specification so contact the HT R&D center in advance if you want to use it.



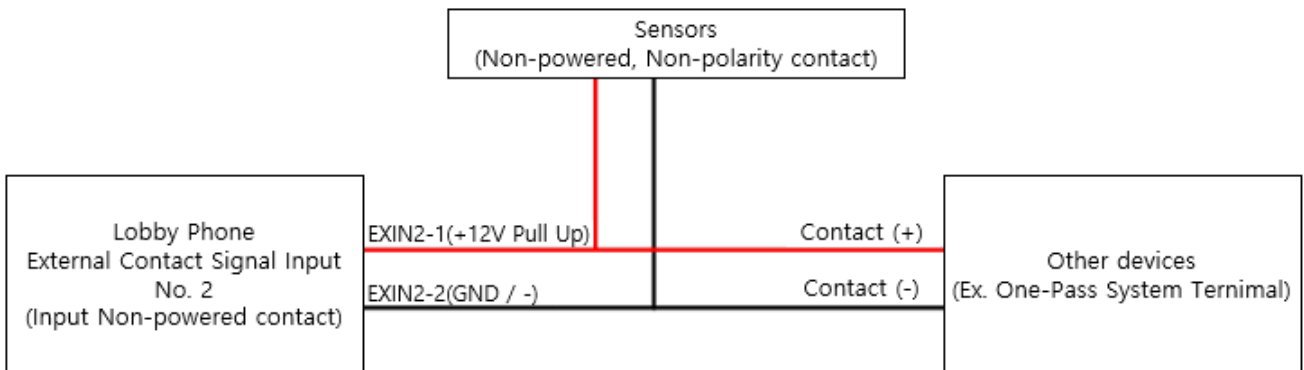
EXIN0_1: Applied Reverse Prevention Diode.

B. EXT I/P Connector (J302)

Item	Name	Description	Remark
External Contact Signal Input	EXIN2-1	Contact Signal Input Port 2-1(+), 2-2(-)	Preliminary Port – Non-powered (Required to ask HT R&D Center in advance) Required to be checked the polarity if you want to use other devices and sensors together.
	EXIN2-2		

* Precaution for using external contact signal input port (EXIN2-1 / EXIN2-2)

- Non-powered, Non-Polarity contact input is available if you want to connect an external contact device alone.
- If you use external contact devices and other devices together, it may affect the polarity and Power specification of its port so required to check this with the HT R&D center.



EXIN2_1: NOT applied Reverse Prevention Diode.

6. Connection Description

6.1 Power Connection

A. Connect the Power Adaptor, ANY122A5C-NIH(12V 2.5A), and a connector, (DPEM-OD-MH-001) and then, connect it to the HLPC-9006, J301.

6.2 Ethernet Connection

- Connect Ethernet cable to J301 RJ45 Connector.
- It supports an Ethernet standard pin map.

6.3 Adjusting sensitivity of a proximity sensor

A. HLPC-9006 has two IR LEDs and two DIP switches (Left IR LED and Right IR LED) that can adjust the output so it can be adjustable with 4 levels.

현대통신(주)	년월일 2020. 11. 05.	문서번호: AA35MIxxxx	변경코드 REV.00	페이지 10/12
---------	----------------------	---------------------	----------------	--------------

B. Levels and recognized distance as per DIP switch. (Left and Right are the same and **default is Level 1**)



Level 1

OFF: 1,2



Level 2

ON: 1



Level 3

ON: 2



Level 4

ON: 1,2

C. Recognizing distance per level.

Level 1: Approx. 70cm.

Level 2: Approx. 1 meter.

Level 3: Approx. 1.2 meter.

Level 4: Approx. 1.3 meter.

* The default of recognizing distance of HLPC-9006 is level 1. If you want to increase the recognizing distance, please adjust the DIP switch level.

7. Installation and Precautions

7.1 Installation Order.

- 1) Set each component installation location and install a back box.
- 2) Connect the wires between the backbox and components.
- 3) Complete the concrete or brick wall.
- 4) Wiring as per the wiring diagram. (wiring and attach components as per the wiring diagram)
- 5) Test

현대통신(주)	년월일 2020. 11. 05.	문서번호: AA35MIxxxx	변경코드 REV.00	페이지 11/12
---------	----------------------	---------------------	----------------	--------------

7.2. Installation Condition

- 1) The ambient temperature range of the system is $-20^{\circ}\text{C} \sim 70^{\circ}\text{C}$ and $18^{\circ}\text{C} \sim 26^{\circ}\text{C}$ is recommended and the recommended Humidity is 20% ~ 70%.
- 2) Keep clean the installation location and avoid direct sunlight.
- 3) Do not install the device at the location which dropped or splashing water and beware of the humid place.
- 4) It must be no effect on temperature and humidity or strong magnetic device near the installed device.
- 5) Select the installation position to minimize wiring length.
- 6) The LCD of the device has an angle of view, so the screen differs depending on the viewing angle.
- 7) AC 220V is used for power and all wiring conditions must be checked before turning on the power switch. (Be sure to connect the protective earth.
- 8) This device is a permanent connection device and it should be installed where each pole of the main power switch has a contact gap of 3 mm or more and it performs a main power shut-off device.

7.3 Back Box.

- 1) HLPC-9006 main unit back box: it is the same as the HLPC-9004 backbox.

7.4 Positioning of a backbox.

현대통신(주)	년월일 2020. 11. 05.	문서번호: AA35MIxxxx	변경코드 REV.00	페이지 12/12
---------	----------------------	---------------------	----------------	--------------

1) The location of the HLPC-9006 main unit backbox.

The appropriate height should be selected for the installation location of the main unit so that it is convenient to use in the lobby of an apartment.

(Recommended Installation Height: 1300mm ~ 1400mm)

2) Precaution of installing backbox.

It minimized the value of the left and right slope, and keep parallel to the front and finish lines of a backbox.

3) The location of the backbox.

When selecting a location for installation of the backbox in the lobby of an apartment, it should be avoided where the camera of the lobby phone is exposed to direct sunlight and reflected light, as the image is distorted by backlight. If there is a backlight, the subject's halo is bright, so the visitor's face may appear dark.